

ISSN 2717-7564

# Journal of Positive School Psychology

An International Forum for the Science of Positive  
Psychology in Education and Schools

[journalppw.com](http://journalppw.com)

## Journal Information

**ISSN:** 2717-7564

**Frequency:** Monthly

**Indexing:** *Scopus* , *EBSCO*

## Ascertain of Critical Issues of Social Enterprises in Bihar

**Manish Prasad, Ph.D.,**

Research Scholar, Department of Social Science, JNU, Jaipur (Rajsthan), Email:  
socialmanish@gmail.com

### Abstract

The motivation behind exploring the study is to intently grill and approve the social enterprises i.e. have their beginning in Bihar. The main aim of the study is to know the plans and importance related to social enterprises in Bihar, which are to make sufficient space and openings to empower the beggared and dejected segments of Bihar areas. The brilliant open doors by setting out of the independent work which could enhance and work on their way of life and lead them to a supportable degree of occupation. This study is a common outline and occasion of social enterprise at work, tenders a hint of proffer to innumerable individuals universally by giving genuine assistance by holding their hands regardless of identities, societies, or other prejudicial components. In any case, this mind offspring from various entrepreneurs have cleared the shores of Bihar like a tidal wave and became instrumental in changing the existences of modest landless ranchers and merchants, who were all until now been carrying on with a daily existence loaded with battle. It gave a successful network to them to the standard market. Therefore, the need for social enterprises is a significant term of social obligation and a method for tackling an assortment of critical cultural issues In Bihar. Thus, this paper gets the essential data from a few exploration papers to reveal insights into social enterprises in the Bihar state of India.

**Keywords:** Bihar, Social Enterprises, Social Values, Social Development, and Social Difficulties.

### Introduction:

Social Enterprises or social businesses are characterized as a business with explicit social goals that fill their essential need. Social endeavors try to boost benefits while amplifying advantages to society and the climate, and the benefits are primarily used to finance social projects. Enterprises are critical to advertising economies since they can go about as the wheels of the monetary development of the country. By making new items and administrations, they animate new work, which at last outcomes in the speed increase of monetary turn of events.

Schumpeter presented the idea of advancement in the hypothesis of social enterprise, (Schumpeter, J.A. 1934). It is the expert utilization of information, abilities, and capabilities or potentially of adapting a novel thought, by an individual or a bunch of individuals by sending off a venture, in this manner to seek after development while producing riches, work, and social great (Parbati S., 2021). The social Enterprise can

be characterized as the person who amplifies an open door (Jain,2019). As per McClelland an empowering climate and one's capacities, at last, choose innovative action (D.C., 2019). In India, a social enterprise is an individual, who can be the pioneer, prime supporter, or the main functionary of a social undertaking, or a Non-Profit, which raises subsidies through certain administrations (frequently gathering pledges occasions and local area exercises). Today, non-benefits & non-governmental associations, establishments, legislatures, and people likewise assume a basic part to lay out, advancing, storing, and exhorting social business visionaries all over the planet. A developing number of instructive establishments are coordinating projects zeroing in on schooling and preparing for social enterprise. (Devi S.,2016). The idea of social enterprise implies various things to various individuals (Dees,2019). One of the analysts has tracked down social enterprise as a non-benefit association and targets to make social worth (Austin, S. 2019; Bosh,2020). Social enterprise uses the strategies to fire up

organizations and track down answers for social, social, or natural issues. Social enterprise endeavors to additional social, social, and ecological objectives in regions, for example, destitution easing, medical services, and local area advancement. In 2010, Social Entrepreneur is worked with by the utilization of the web, the virtual entertainment and sites assist the entrepreneur person with teaming up with individuals on the web and raisins support through swarm subsidizing. Various definitions are given by various individuals on friendly entrepreneurship. We feel that Social Entrepreneur venture is a term with imaginative and innovative use to find the potential open doors which bring change and confront the social requirements. Further, we are showing the two terms. Social and Entrepreneur venture is the best test to know the specific regarding social entrepreneur venture. Social entrepreneurs venture considering the term what we mean by friendly necessities (Mair, 2018). The term social means drives pointed toward helping other people (Prabhu, 2010). Social business ventures consider moral thought processes (Bostin 2019; Cafford 2018). Shan and Venkatramn (2000) portray business as a field that examines how, by whom, and with what impact potential chances to make labor and products.

Some examples of social enterprise in Bihar are many and this article highlights some of the greatest such as “Azim Premji Foundation is a non-profit organization, established in 2000 that works primarily in the domain of Education and Corporate Social Responsibility (CSR), Dr. Birbal Jha is a social entrepreneur and Etymologist from Bihar who has been working towards the upliftment of the downtrodden communities, CEO and founder of Glocal healthcare which provides telemedicine, Sabahat Azim is a social entrepreneur who has done a lot of good work in Bihar, and Gunajit Brahma is a social entrepreneur who was born in Assam and runs multiple companies like Baati Energy, Jeevanksh, and Farmeasy Technologies, among many others. Jeevanksh promotes and markets farm produce of organic farmers in Bihar”. We can suggest the eight ways to encourage the social enterprises in Bihar State:

1. To foster a decree to enable undertaking.
2. To make an association between laborers and the association.
3. To celebrate misunderstandings.
4. To advance 'undertaking attempt'.
5. To seek after interests generally through the association.
6. To business venture is a viewpoint.
7. To perceive and remunerate.
8. To form individual brands.

Consequently, the Bihar government facilitates a broad Entrepreneurship cum Start-up Drive to make "Youth Enterprising" in districts and blocks of Bihar. This has been the best Entrepreneurship Campaign in the Country covering pretty much 200 foundations in all of the 38 regions and 60,000 correspondences with likely business visionaries/people with contemplations and recommendations. In every one of the 67 Start-Up Yatra's in 38 areas of Bihar from 2013. In this way, in view of different examinations, the review found the exploration hole connected with business visionaries, new companies, and women businesses in various fields.

## LITERATURE REVIEW

Social Enterprise as training that incorporates financial and social worth creation has a long legacy and a worldwide presence. The worldwide endeavors of Ashoka, established by Bill Drayton in 1980, to give seed subsidizing to business people with a social vision (<http://www.ashoka.org>); the different exercises of Grameen Bank, laid out by Prof. Yunus in 1976 to destroy destitution and engage ladies in Bangladesh (<http://www.grameen-info.org>); or the utilization of expressions to foster local area programs in Pittsburgh by the Manchester Craftsmen's Guild, established by Bill Strickland in 1968 (<http://www.manchesterguild.org>): Williams (2019) contended that interest in business venture as a field of study was critically animated by local area pioneers' conviction that business was a characterizing pattern of the 21st 100 years.

Additionally, we see that the ascent of academic interest in friendly business remains closely connected with a rising interest in the peculiarity among elites. Business assumed a critical part in financial development, advancement, and easing neediness. What's more, mindfulness in regard to business venture is required. In large numbers of the non-industrial nations is tentatively the most un-examined. Business venture might influence monetary development in different ways. They might present significant developments by entering markets with new items or creation processes. Innovative peculiarities focused on monetary improvement have gotten a lot of insightful consideration (Koetler & Keller (2019). Business as an interaction to cultivate social advancement has as of late drawn in light of a legitimate concern for specialists (Berry, 2019; Parasuraman, 2018; Zeithaml, et. Al. 2000).

The improvement of social business as an area for research intently looks like the advancement of exploration on business itself. Social business as a social critical thinking try is arising as a socially creative plan of action for the necessary social change and change in the entire world. Taking into account its accepted potential for tackling the social issues, the field of enterprise is getting huge consideration from the two researchers along with experts internationally (Sharma & Sharma 2019).

Social business is practiced where some individual or people point either only or in a viable conspicuous manner to make social worth: (1) profit orientation (2) perceiving and taking advantage of chances to make this worth, (3) utilizing development, (4) enduring gamble and (5) declining to acknowledge impediments in accessible assets. (Ana M.; Sethi; Khan 2020). Business venture improvement in rustic regions will go far in supporting the by and large financial development of India. Business venture alludes to the demonstration of setting up another business or restoring a current one by making the most of new open doors (Bhatia and Singh D., 2019). The examination dissecting the significance of business in monetary development is expanding across countries (Satar M., 2018).

The social business venture isn't a fresher idea however the situation of the idea has ascended higher than ever as of late. As the legislature of India has made CSR a more reasonable obligation than a simple custom, corporates are currently searching for grater jobs in aiding the general public in a way that is both monetarily and socially gainful (Rawal T., 2020).

### **Objectives of the Study:**

- 1.: To ascertain the Importance of Social Enterprises in the Bihar state of India.
- 2.: To explore the Scope and Opportunities of Social Enterprises in the Bihar.
- 3.: To explore the Discussions of Social Enterprises in the Bihar State of India.

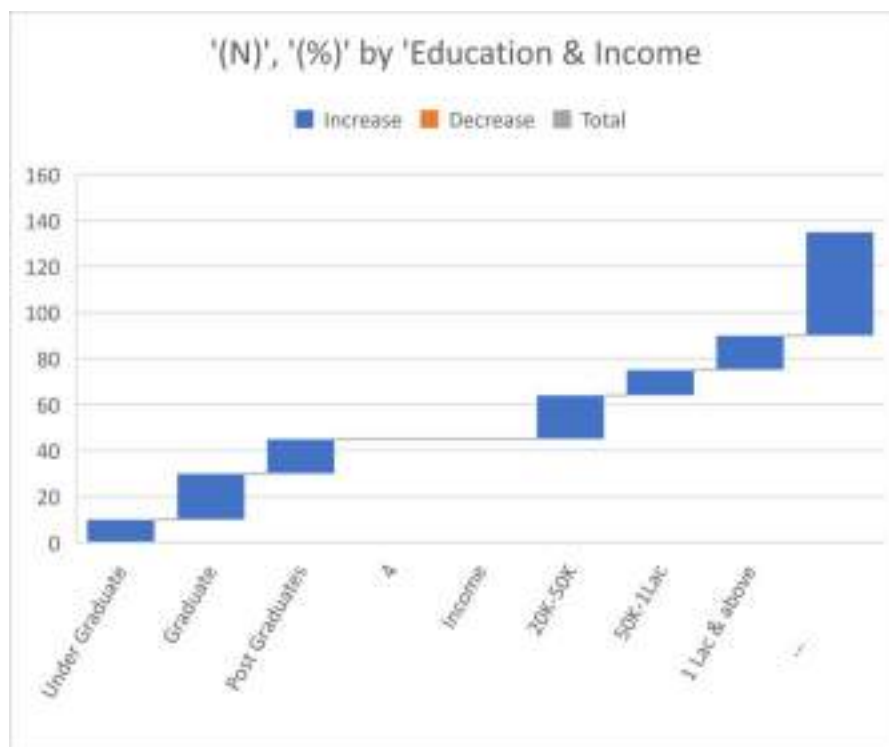
### **Research Methodology:**

- The present study is based on primary and secondary data.
- The secondary data has been collected from, different magazines and other websites.
- The findings for primary data are drawn from 45 respondents, self-construct questionnaire has been used for the study to collect the sample. The questions are based on dependent and Independent Variables i.e., social enterprise and social values and social development.
- Year of Study: 2021 - 2022.
- Sample Selection: Entrepreneurs from the Bihar State of India.
- Area Selected for Study: Bihar State of India.
- Variables: Social Values in Bihar (Dependent Variable) and Social Enterprises and Social Development (Independent Variable).

### **Data Interpretations and Findings:**

Based on the Objectives of the study: the Descriptive statistic of demographic variables such as Gender, Age, Education, and Income of the respondents:

S. No.	Gender	No. of the questionnaires received (N)	Percentage (%)
1	Female	20	45
2	Male	25	55
<b>Total</b>		<b>45</b>	<b>100</b>
<b>Age (in years)</b>			
1	25-40	16	35
2	41-56	23	52
3	57 & Above	6	13
<b>Total</b>		<b>45</b>	<b>100</b>
<b>Education &amp; Income</b>		<b>(N)</b>	<b>(%)</b>
1	Under Graduate	10	22
2	Graduate	20	45
3	Post Graduates	15	33
<b>Total</b>		<b>45</b>	<b>100</b>
<b>Income</b>			
1	20K-50K	19	42
2	50K-1Lac	11	25
3	1 Lac & above	15	33
<b>Total</b>		<b>45</b>	<b>100</b>



### KMO and Bartlett's Test

### KMO and Bartlett's Test

Kaiser-Meyer-Olkin Measure of Sampling Adequacy.		.744
	Approx. Chi-Square	11180.903
Bartlett's Test of Sphericity	df	465
	Sig.	.000

To check the adequacy of the data for extraction of principal components, the Kaiser-Meyer-Olkin criterion to measure sampling adequacy and the Bartlett's test of Sphericity have been used. The KMO value should be greater than .70. Here, it is .74, which is good and indicates the presence of sufficient inter-correlations in the data set and appropriateness. This means that the variable is highly correlated. The Bartlett test of Sphericity is significant at  $p = .000$ , which indicates that correlation matrix is not an identity matrix. Only factors with eigen value greater than 1 have been retained.

#### **B<sub>1</sub>: To ascertain the Importance of Social Enterprises in Bihar State of India.**

##### **Work Development**

The main major financial worth that social business makes is the clearest one since it is imparted to business people and organizations the same: work and business creation. Gauges goes from one to seven percent of individuals utilized in the social business area. Furthermore, social ventures give business open doors and occupation preparing to fragments of society at a work weakness the monetary circumstance of 6,000,000 distraught ladies miniature business visionaries were moved along.

##### **Advancement/New Goods and Services**

Social endeavors create and apply advancement critical to social and financial turn of events and foster new labor and products. Issues tended to incorporate probably the greatest cultural issues, for example, HIV, mental chronic sickness, lack of education, wrongdoing and substance addiction which, critically are stood up to in imaginative ways. A model appearance that these new methodologies at times are

adaptable to the public area is the Brazilian social business visionary Veronica Khosa, who fostered a locally situated care model for AIDS patients which later changed government wellbeing strategy.

##### **Social Capital**

Models are the progress of the German and Japanese economies, which have their foundations in long haul connections and the morals of collaboration, in both fundamental advancement and modern turn of events. The World Bank additionally sees social capital as basic for destitution easing and manageable human and financial turn of events. Interests in friendly capital can begin a temperate cycle.

##### **Value Promotion**

Social Enterprise encourages a more fair society by resolving social issues and attempting to accomplish continuous economical effect through their social mission as opposed to simply benefit boost. At last, social endeavors ought to be viewed as a positive power, as change specialists giving driving edge development to neglected social necessities. Social business isn't a panacea since it works inside the general social and monetary system, yet as it begins at the grassroots level it is frequently disregarded and merits considerably more consideration from scholastic scholars as well as strategy producers. This is particularly significant in non-industrial nations and government assistance states confronting expanding monetary pressure.

#### **B<sub>2</sub>: To explore the Scope and Opportunities of Social Enterprises in Bihar State of India.**

Social business is a developing, overall development. The extent of social work is not

generally restricted to activism. Today, there are numerous valuable open doors in youngster government assistance, local area policing, medical services, directing and so on in not exclusively NGO's yet additionally public and worldwide bodies as well as friendly undertakings. Moreover, there is massive extension for social business venture and beginning your own social drives. Social business will assume a major part in carrying the development to the country masses in India thus it becomes essential to concentrate on the elements, such as fair exchange, that will shape the social business venture reasoning. First, the study will investigate the regions where India deals with issues, some of which are recorded underneath:

1. Making the informed young people employable-a considerable lot of our courses are planned so as to not take care of necessities of the business.
2. Healthcare-reasonableness
3. Urban and Rural Sanitation
4. Making utilization of inexhaustible wellsprings of force
5. Nutrition and Food for poor people.
6. Affordable lodging.
7. Agriculture

A lot more are there, yet these are the essential requirements of the Indian culture, which are being the subjects of conversations from such countless years, numerous strategies and regulations were passed by state and focal legislatures of India. Yet exists! All demonstrations of business start with the vision of an appealing open doors. An alluring open door is one that has the potential for legitimize the venture of time, energy and cash. Another term portrays the quality of non-benefit association, government and business, Social businesses are at times referred change specialists. They make enormous scope change utilizing ideas and convince others to embrace it. Change can be public or worldwide. Social business in India is particularly shaped by the possible setting. At the point when his mind - kid Grameen Bank become fruitful in aiding individuals and lift themselves out of neediness in country Bangladesh by furnishing them with credit

without guarantee. Social ventures in these areas won't just set out many open doors yet additionally can track down an answer for these issues. For instance, a venture to prepare the young with modern situated abilities, is a decent innovative choice simultaneously it will answer the issue of jobless taught youth. There are a few plans and plans both by focus and state government at various levels for the advancement of provincial business visionaries in India. In 1999-2000, the public authority of India sent off "Swarna Jayanthi Grama Swarozgar Yojana" programme for advancing destitution mitigation through independent work and the association of poor into Self-help Groups. Credits endorsed under this plan have given another life to the ladies in towns for their social and financial empowerment. (Kumar and Shetty, 2019).

### **B<sub>3</sub>: To explore the Discussions of Social Enterprises in Bihar State of India.**

It is said and research shows that demeanor towards business visionaries and business venture is a significant component that decides pioneering development in a nation however discussing the Indian culture it keeps on excess gamble unwilling. Indeed, even specific examinations have shown that our Indian money managers need to put less in our country because of administrative climate and are prepared to contribute abroad. The social enterprise here face provokes like restricted admittance to back, regulatory technique, and unfortunate foundation and so forth. (Sharma and Kulshreshtha, 2019). At the point when social, business visionaries try to achieve a social change, they face with various obstacles. Social enterprise is confronting following:

- Money manager's support
- Government Approval
- Keeping up with item
- Supporting workers
- Rivalry from others
- Advancing Awareness
- Conveying the Business
- Thought drawing in Donors
- Working from a distance

- Employing
- Carving out Opportunity
- Getting Fund
- Fund-raising
- Family and Friend Support
- Getting Skilled Employees

Bihar has in excess of 100 million occupants and is India's second most unfortunate state. The vast majority of the populace lives in provincial regions and the state's efforts to cure what is happening have been worthless. Social business visionaries and common society associations have attempted to apply their developments due to unfortunate reach and absence of interest side take-up, further fueling the issue.

Presently the Government of Bihar and the World Bank have met up to fabricate a local area based institutional stage Jeevika that will give monetary capital as well as non-financial help to empower social pioneers achieve a quantum change in Bihar. Jeevika is likewise targeting activating 1,000,000 ladies into Self Help Groups (SHGs). Over the course of the following five years they intend to arrive at 15 million families.

### Conclusion:

In Bihar, social enterprise has arisen undeniably and is very much appreciated. There are many difficulties looked by the social business visionaries like conveying the business thought, working from a distance, getting store, government endorsement, contest from others, gaining innovations, advancing mindfulness and getting gifted specialists. However, these difficulties leave there are numerous fruitful instances of social innovative endeavors like Lijjat Pappad, Amul and Gramin Bank. There is part of extension for social business in Bihar. Bihar is encountering an expansion in friendly business and endeavors by friendly business to track down reasonable answers for different social issues of society. With changes in innovation and expanding rivalry, social business visionaries need to turn out to be more powerful. Albeit, a few confidential area and non-benefit associations have made an interpretation of novel thoughts into

substantial social effects they couldn't increase frequently for absence of assets and admittance to huge public foundations. These advancements turn out to be generally limited.

To resolve this issue in Bihar, Jeevika sent off an extraordinary commercial center called 'Bihar Innovation Forum' in 2007. The goal was to track down answers for work on provincial jobs past laid out channels through a straightforward and cutthroat cycle. 25 developments were highlighted in the discussion and given public acknowledgment. A portion of these awardees were likewise offered a chance to increase their developments through the local area foundations. One of their fruitful developments PRADAN had the option to expand the productivity of rice 2.5 times. Taking part ranchers have seen an efficiency increment of 86% in rice and 72% in wheat.

Supported by the progress of first development gathering, Jeevika as of late sent off the second version of the forum. The government has carried out a significant effort plan with roadshows the nation over to call for recommendations from public, social business visionaries and common society associations in 8 work subjects: Agriculture, Livestock, Financial Services, Rural Energy, ICT Based Solutions, Skill Development and Non-Farm Sector, Improved Access to Entitlements and, Better Access to Services.

### REFERENCES:

- Prem S. Potabatti, Nikhil D. Boob (2018), "Youth Entrepreneurship: Opportunities and Challenges in India", *Journal of Research & Method in Education*, Vol,5, Issue : 2, pp.55-59.
- Peredo, A.M., and McLean, M. (2018) Social entrepreneurship: A critical review of the concept", *Journal of world business*, Vol,41, Issue:1, pp.56-65.
- Prabhu, G.N. (2019) Social Entrepreneurship Leadership", *Career Development International*, Vol,493, pp.140-145.
- Schwab Foundation (2018), *Fostering Social Entrepreneurship: A Comparative Study of the Legal, Regulatory and Tax Issues in Brazil, Germany, India, Poland, UK and USA. Davos*: Schwab Foundation.



- Seelos, C., & Mair, J. (2019), "Sustainable development, Sustainable profit", *European business forum*, Vol, 20, pp. 49-55.
- Schumpeter, J.A. (1934), "The Theory of Economic Development" Cambridge, Mass.: Harvard University Press.
- Seema Devi (2016), Social Entrepreneurship: Challenges in Way to rise," *International Journal of Research*, Vol, 4, Issue: 9, pp. 191-197.
- Shubham Khairnar (2018, October 13). *Yourstory.com*. Retrieved from <http://www.google.com/amp/s/yourstory.com/my-story/top-10-young-social-entrepreneurs-of-india-cpk67hpmyu/amp>.
- Shane, S., & Venkatraman S. (2000), "The Promise of Entrepreneurship as a field of research" *Academy of Management Review*, Vol, 25, Issue: 1, pp. 217-226.
- Tripda Rawal (2018), A study of Social Entrepreneurship in India", *International Research Journal of Engineering and Technology (IRJET)*, Vol, 05, Issue: 01, pp. 829-837.

ISSN 2717-7564

ISSN PORTAL The global index for Publishing Resources

Identifiers

ISSN 2717-7564

Linking ISSN (ISSN-L) 2717-7564

Links

URL

Google

Bing

Yahoo

National Library of Turkey

Key-title Journal of positive school psychology [Online]

Resource information

Archival Status

Title proper: Journal of positive school psychology.

Original alphabet of title: Basic roman

Subject: Dewey : 150

Subject: Psychology

Publisher: Gorkdipar India: ASR Research Center

Dates of publication: 2020- 9999

Frequency: Monthly

Type of resource: Periodical

Language: English

Country: Turkey

Medium: Online

Indexed by: FATCAT

Indexed by: CROSSREF

Indexed by: ROAD

Indexed by: THE KEEPERS

Related titles

Resource network

Resource history

Continues: Journal of positive psychology and wellbeing, 2587-0530

My Tools

Share

Print

Display linked data

Discover all the features of the complete ISSN records

Access the full version of the ISSN Portal